

Worklist: 6178

REVIEWED

By Brittany Wylie at 10:22 am, Dec 09, 2022

<u>LAB_CASE</u>	<u>ITEM</u>	<u>ITEM_TYPE</u>	<u>DESCRIPTION</u>
C2022-2650		UCK	AM 2 Urine Toxi A





AM 2: De-Tox Tube A Urine Extraction

Extraction Date: 12/6/22

Analyst: Anne Nord

Negative Urine Lot: 12522

GC/MS ID: deadlift

Pre-Analytic:

- 1. *Positive Control Working Solution Preparation Instructions:*
Tube A positive control may be commercially obtained or prepared in-house. At a minimum, the control must contain at least one phenethylamine at an approximate concentration between 500 and 3000 ng/mL, and one opiate at an approximate concentration between 300 and 3000 ng/mL.
- 2. Verify Tune and Tune evaluation completed within the previous 7 days. Tune and Tune evaluation reports initialed and filed.
- 3. Create GCMS sequence to include controls, case blanks and case samples.

Analytic:

- 1. Remove working solutions, controls, and samples from cold storage.

(Optional Steps for Enzyme Hydrolysis- completed in addition to General extraction without Hydrolysis)

- 2a. In labeled round bottom Extraction tubes: add 4.5mL of case samples, and controls.
- 2b. Add 150uL of 2M acetate buffer, vortex.
- 2c. Add 100uL glucuronidase, cap and rock gently.
- 2d. Heat at 60C for 2 hours. Allow to cool before proceeding to step 3.
- 3. To each labeled De-Tox Tube add 5mL sample, Positive control: spike positive control working solution.
- 4. Place on tube rocker at ambient temp for approx. 10 minutes.
- 5. Centrifuge for approx. 10 min at ~2500-3000rpm.
- 6. Transfer solvent (upper layer) to new tube, and evaporate to ~100-300uL.
- 7. Transfer to labeled ALS vial with insert.
- 8. Place ALS Vials in appropriate location on GCMS rack and run using appropriate GCMS method.

Post-Analytic

- 1. Complete Data analysis on all samples and corresponding sample blanks
- 2. Did positive and negative control samples provide intended response? Yes
- 3. Sample Criteria for ID: RT +/- 0.2 min. (or 0.1 min. for phenethylamines)
- 4. Central File Packet to include: LIMS Worklist, Method Checklist, Working solution prep sheet(s), Positive control GCMS data printouts,

Toxicology AM method 2 control prep info

20879  3/17/23

working solution 9890 ng/ml in meoh methamphetamine, ~~21098~~ 21098 ng/ml morphine
Stock solution 1mg/ml 100 ul morphine added to 9000 ul working solution lot 42722

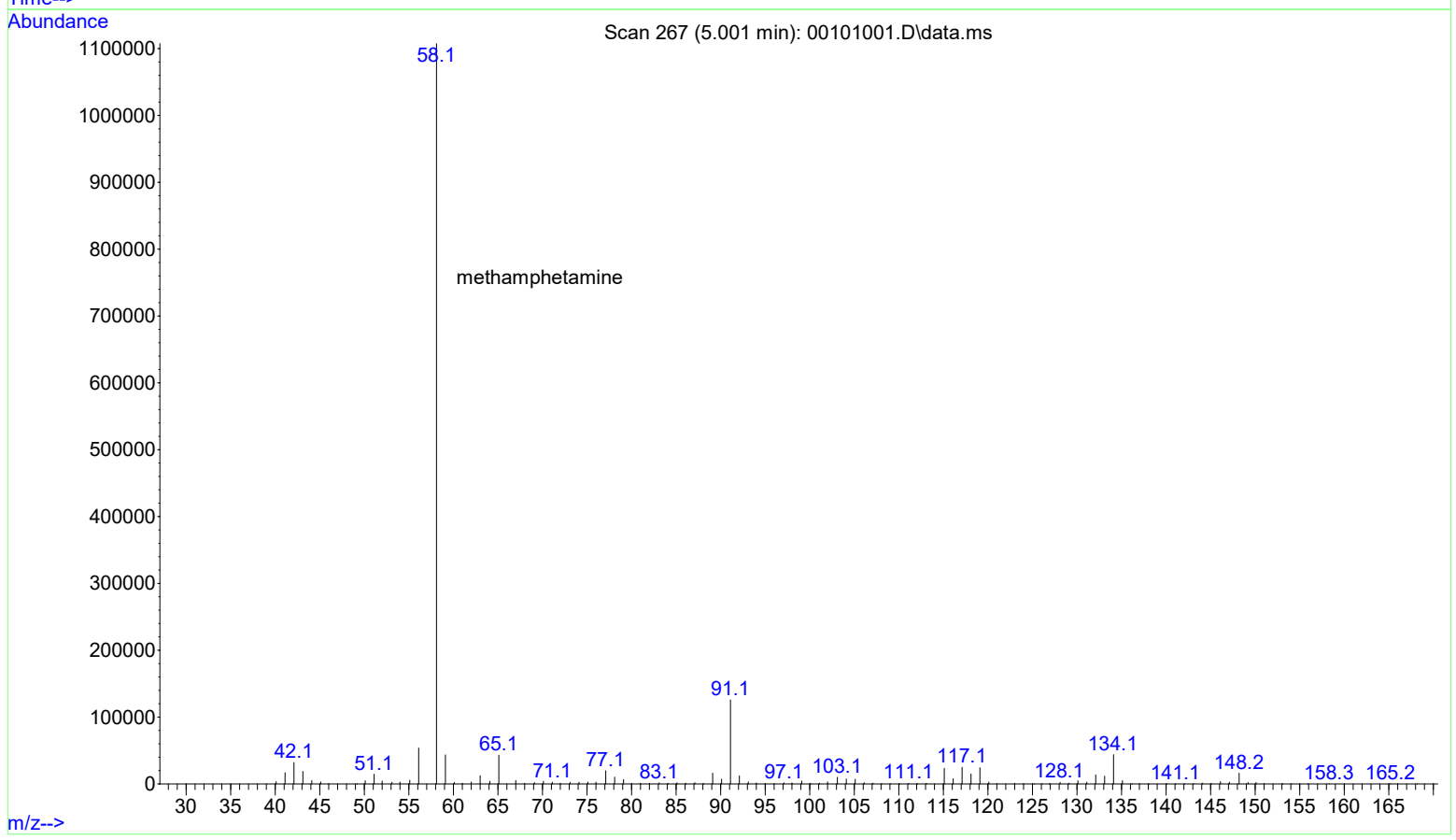
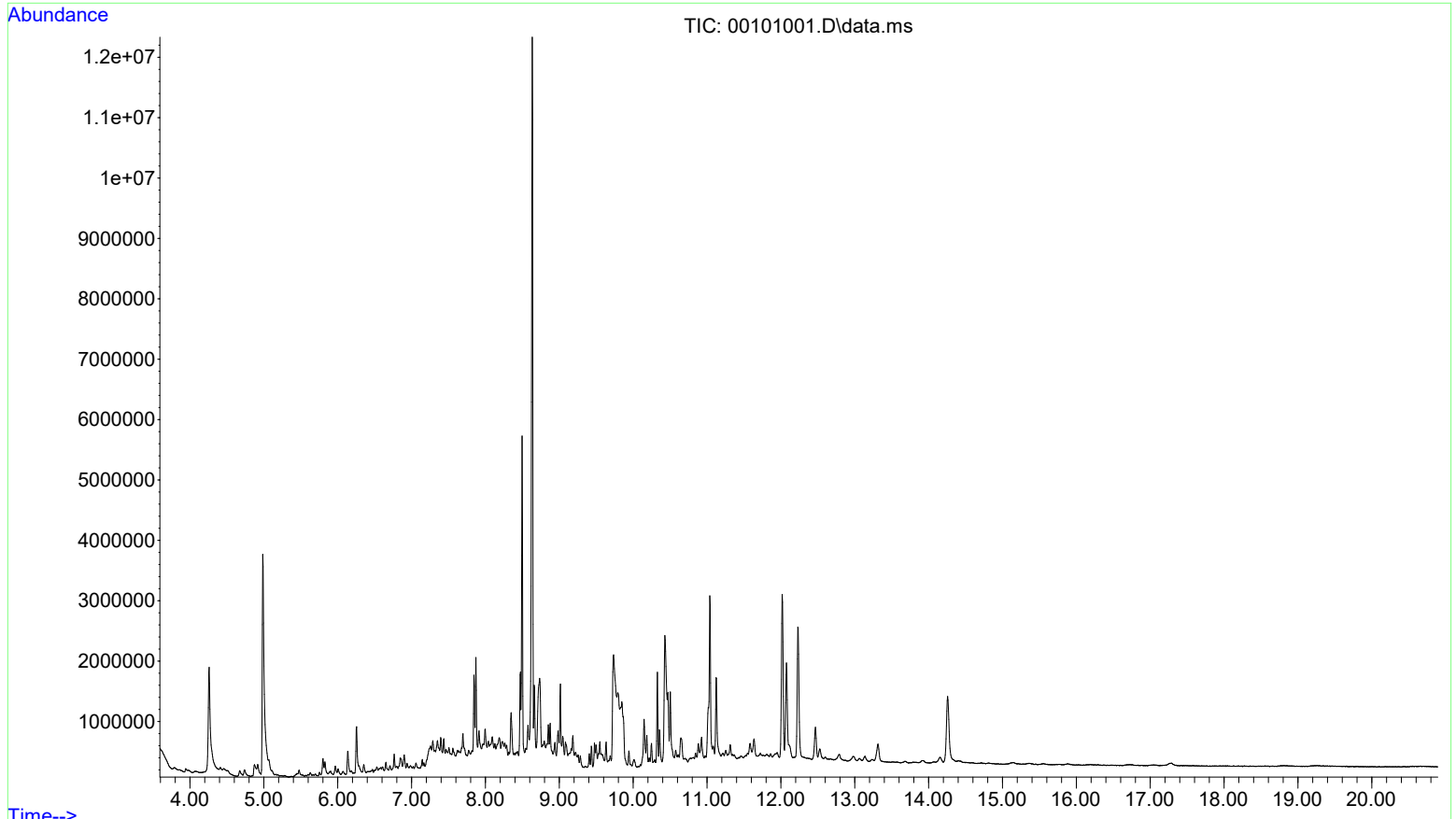
ppd 6/16/22: Exp: 4/27/2023 lot 61622 by baw

Drug	lot	expiration
Methamphetamine	FE03132001	7/1/2025
Morphine	FE03232010	4/1/2025

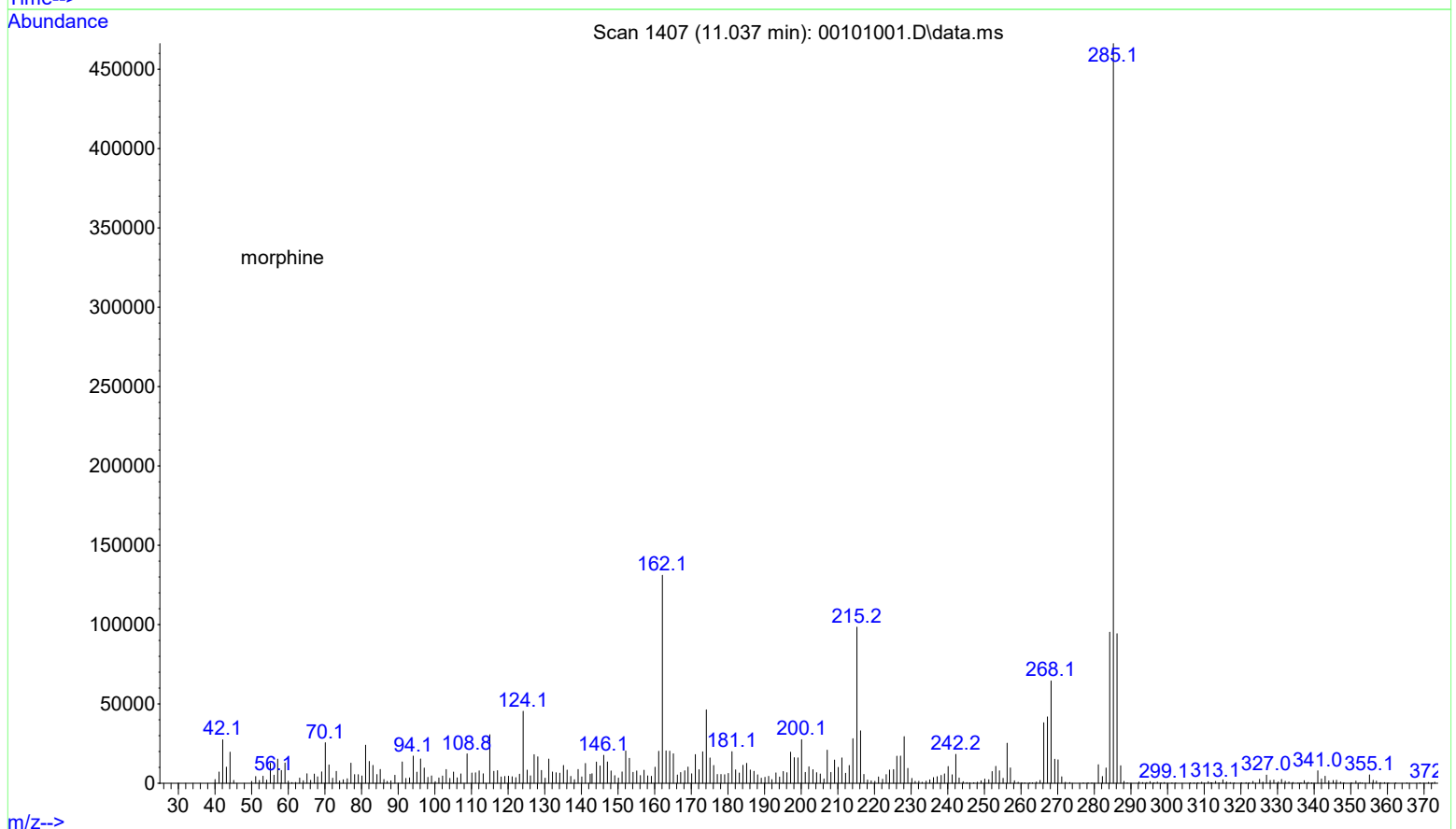
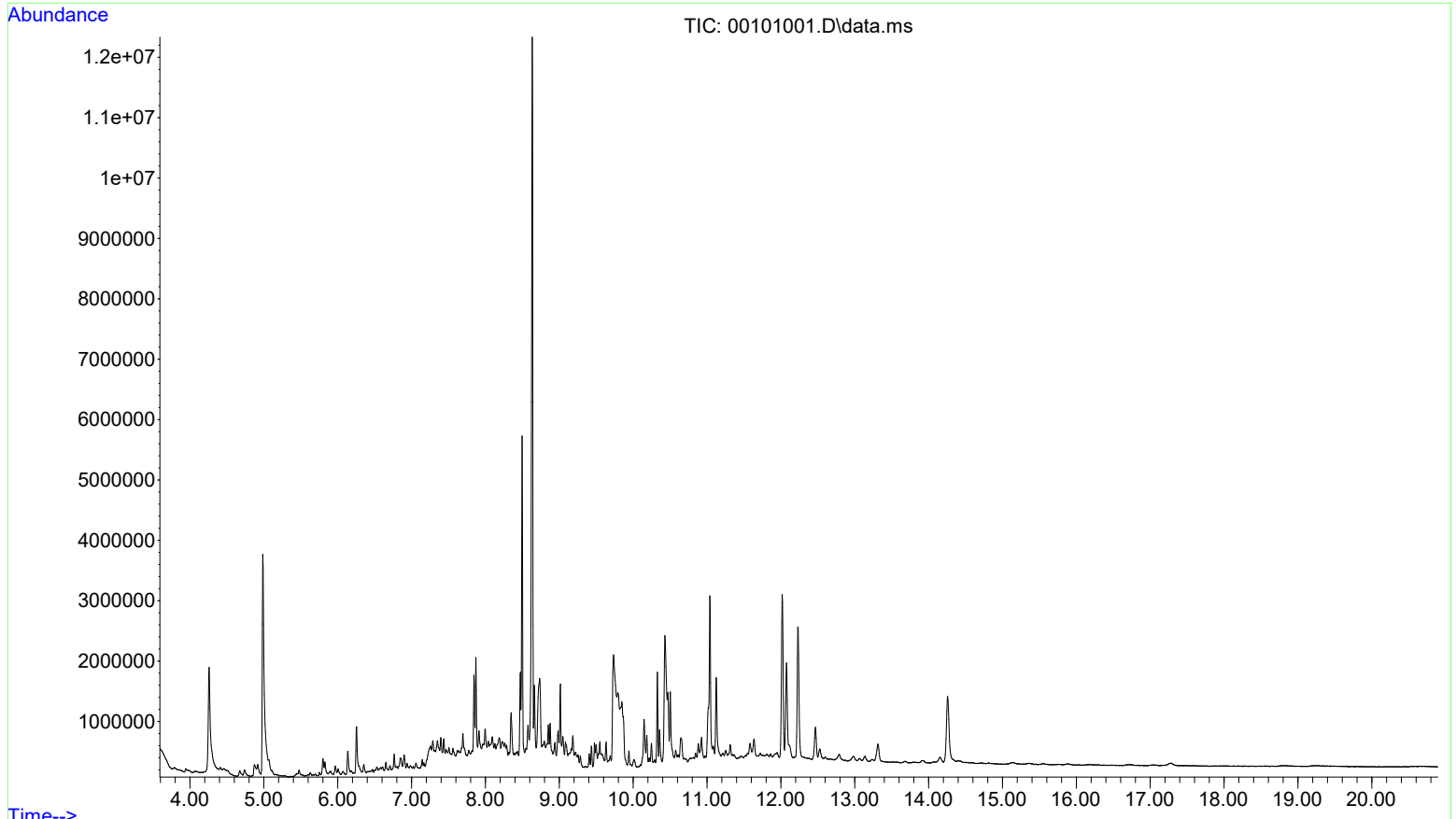
AM 2 control add 500 ul working solution to 4500 ul negative urine and extract.
approximate concentration 989 ng/ml methamphetamine
approximate concentration ~~2110~~ 2110 ng/ml morphine

2088  3/17/23

F:\Hunter\GCMS\1\data\2022\120622\00101001.D
Op:
Acquired : 06 Dec 2022 10:53 using AcqMethod am2.M
Instrument : Deadlift
Sample Name: positive control urine
Misc Info : am2
Vial Number: 1



F:\Hunter\GCMS\1\data\2022\120622\00101001.D
Op:
Acquired : 06 Dec 2022 10:53 using AcqMethod am2.M
Instrument : Deadlift
Sample Name: positive control urine
Misc Info : am2
Vial Number: 1



F:\Hunter\GCMS\1\data\2022\120622\00201002.D
Op:
Acquired : 06 Dec 2022 11:17 using AcqMethod am2.M
Instrument : Deadlift
Sample Name: negative control urine
Misc Info : am2
Vial Number: 2

